

Appendix C - ENVIRONMENTAL JUSTICE OVERVIEW

KY-3041 Corbin By-Pass Extension Study: Knox & Laurel County Environmental Justice Report



Prepared By:
Cumberland Valley Area Development District
P.O. Box 1740
London, KY 40743
Phone: (606) 864-7391 | Fax: (606) 878-7361
www.cvadd.org



Table of Contents

	Page
1.0 Introduction	3
2.0 Study Findings / Study Area	3
3.0 Study Findings / Population by Race	4
4.0 Study Findings / Population by Poverty Level	4
5.0 Study Findings / Population by Persons 65 and Over	4
6.0 Study Findings / Population of Persons 5 and Over with Disabilities	5
7.0 Conclusion	

Appendices

Appendix A: Census Tracts and Block Groups Maps	6
Study Focus Area Map	7
Census Tracts and Block Groups Map	8
Total Population Map	10
Population by Race—White Map	11
Population by Race—Black or African American Map	12
Population by Race—American Indian & Alaska Native Alone Map	13
Population by Race—Asian Alone Map	14
Population by Race—Native Hawaiian & Other Pacific Alone Ma	15
Population by Race—Other	16
Population by Race—Two or More Races Map	17
Population by Race—Hispanic or Latino Map	18
Population by Poverty Level Map	19
Population by Persons 65 and Over Map	20
Population by Persons 5 and Over with Disabilities Map	21
 Appendix B: Census Tracts and Block Groups Table	 22
Total Population	23
Population White Alone	24
Population by Black or African American	25
Population by American Indian & Alaska Native Alone	26
Population by Asian Alone	27
Population by Native Hawaiian & Other Pacific Alone	28
Population by Two or More Races	29
Population by Hispanic or Latino Origin	30
Population by Poverty Level	31
Population by Persons 65 and Over	32
Population by Persons 5 and Over with Disabilities	33

1.0 Introduction

This document assesses the community demographics involved in the Corbin Bypass Transportation Study for the City of Corbin, which includes portions of Knox and Laurel Counties. The Cumberland Valley Area Development District (CVADD) has analyzed and prepared the following document to identify any concentration of population that could be displaced or segmented as a result. The data displayed in this report has been compiled from a number of resources, including the U.S. Census Bureau, Kentucky State Data Center, Kentucky Transportation Cabinet (KYTC) Division of Planning, local elected officials, community leaders, and field observations of the study area. The information and results are intended to assist the Kentucky Transportation Cabinet in making informed and prudent transportation decisions in the study area, especially as it pertains to the requirements of Executive Order 12898¹, to ensure equal protection to all groups potentially impacted by the study.

The defined project study area includes extending the existing Corbin Bypass (KY-3041) from US-25E to a new interchange on I-75, a distance of about 7.0 miles.

The project is listed as item number 11-190.00 in the Kentucky Six-Year Highway Plan.

This report includes maps and tables of statistical comparisons of the study area based on U.S. Census Tracts and Block Groups with regard to minority, low income, and aging populations for the United States, Kentucky, Knox County and Laurel County. The Study Area includes tracts and block groups directly in and around portions of the defined area.

2.0 Study Findings / Study Area

This Environmental Justice and Community Impact Report should be utilized as a component of the planning study being conducted by Kentucky Transportation Cabinet's Division of Planning, for the Corbin Bypass Study within Knox and Laurel County.

This study is intended to help define the location and purpose of the project and meet federal requirements regarding consideration of environmental issues as defined in the National Environmental Policy Act (NEPA).

The Corbin Bypass Transportation Study area contains 5 Block Groups within 3 Census Tracts from the 2010 Census Data. The Census Tracts and Block Groups are listed below. (Appendix A includes maps). Detailed data of Census Tracts and Block Groups are located in Appendix B of this document.

Knox County

Census Tract: 9304

Block Groups: 1

Laurel County

Census Tract: 9710.01

Block Groups: 1 and 2

Census Tract: 9710.02

Block Groups: 1 and 2

¹Executive Order 12898 signed February 11, 1994 states, "...each Federal agency shall make achieving environmental justice part of its mission by identifying and addressing, as appropriate, disproportionately high and adverse human health or environmental effects of its programs, policies, and activities on minority populations and low-income populations..."

3.0 Study Findings / Population by Race

The defined study area within Knox and Laurel Counties encompasses portions of the following Census Tracts: 9304, 9710.01, and 9710.02. Knox and Laurel County's population, by race percentages, is lower than the national and state averages. There are several tracts that warrant further discussion.

Census Tract 9304 in Knox County and Census Tracts 9710.01 and 9710.02 in Laurel County contains a higher percentage than the state in percent of American Indian and Native Alaskan. For the Hispanic or Latino population, the census tracts in Knox County contain less than 1% of the total population. Laurel County census tracts contain less than 2% of the total population as being Hispanic or Latino. The highest populated area is Laurel County Census Tract 9710.01 in Block Group 1 with 1.79%, or 47 people that are considered Hispanic or Latino.

4.0 Study Findings / Population by Poverty

The defined study area within Knox and Laurel Counties encompasses portions of the following Census Tracts: 9304, 9710.01, and 9710.02. Knox and Laurel County's population below poverty level exceeds the state and national levels.

Knox County Census Tract 9304 contains the highest percentage of the population below poverty level in the study area at 34.90%. Laurel County Census Tract 9710.01 contains 25.80% of the population below poverty level, while Census Tract 9710.02 contains 27.20%. The state average for Kentucky below the poverty level is 19% while the national average is 15.30%.

In the Appalachian Regional Commission's "County Economic Status and Number of Distressed Areas in Appalachian Kentucky, Fiscal Year 2014," they indicated that Laurel County is considered an At-Risk County in Economic Status and Knox County is a Distressed County in Economic Status. Census Tracts 9710.01 and 9710.02 in Laurel County that are included in the Corbin Bypass Study Area have been identified as a Distressed Area.

A subsequent review of poverty data within affected Census divisions should be undertaken to determine if particular concentrations of population below the poverty level exist in the study area; and if so, proactive measures are undertaken to insure that these groups are not disproportionately affected by any projects.

5.0 Study Findings / Population by Persons 65 and Over

The defined study area within Knox and Laurel Counties encompasses portions of the following Census Tracts: 9304, 9710.01, and 9710.02. In persons aged 65 and older, Knox County Census Tract 9304 had a percentage of 16.65%, which is a higher percentage than Kentucky (14.00%) and the United States (13.70%). Laurel County Census Tract 9710.02 Block Group 2 had a percentage of 13.80%, which is a higher percentage than the national average (13.70%). After discussions with other community members, it appears that the higher percentages are the result of older sections of the City of Corbin. It is anticipated that the implementation of projects would not have a disproportionate effect on the population of persons age 65 and over residing in the study area.

6.0 Study Findings / Population by Persons 5 and Over with Disabilities

At the time of this report (September 2013), Census 2010 data for disabled populations was not available at the state, county, and census tract levels. The 2000 Census Data was utilized for this demographic category to not neglect any disadvantaged populations, as noted by the KYTC Methodology Assessment for Environmental Justice Concerns.

The defined study area within Knox and Laurel Counties encompasses portions of the following Census Tracts: 9304, 9710.01, and 9710.02. Knox and Laurel County's population of persons over 5 with disabilities exceeds the state and national levels. Although the census tracts defined in the study have higher levels of population of persons over 5 with disabilities higher than state and national levels, they are comparable to the regional percentages.

It should be also noted that these percentages are certainly comparable to many surrounding counties in this section of southeastern Kentucky. Discussions with local officials and community members resulted in the conclusion that concentrations of persons with disabilities are located within the study area; however, it is not anticipated that the implementation of the project would not have a disproportionate affect on the population of persons over 5 with disabilities residing in the study area. Nonetheless, future project development efforts should be sensitive to this issue.

7.0 Conclusion

Based on data obtained from the U.S. Census Bureau for income, race and age, discussions with local officials and field observations; it appears there is a concentration of populations over 65 years of age in Corbin. As previously noted, the concentration of population over 65 years of age should not be disproportionately effected in the study area. Further review should be considered in future project planning and design phases and if necessary, field visits, discussions with local officials and/or review of other sources of information should be completed.

Analysis of the minority population data showed several of the block groups as having an identified concentration of some sort. Some were significant, some were only minor. The more significant concentrations identified were noted in the narrative analysis.

All areas within this study should be given full consideration in the planning process to achieve the goals put forth by the U. S. Department of Transportation. The concentrations identified should not be adversely affected by improvements.

The elevated percentages in the populations below poverty level might be indicative of concentrations throughout the study area.

However, based on the economic status of this rural depressed county, these percentages are not uncommon for this area. Though the projects in this study should have no adverse effects on the minority, elderly, or low income populations, further consideration should be given to above areas should any project from this study move forward into design.

Appendix A: Maps

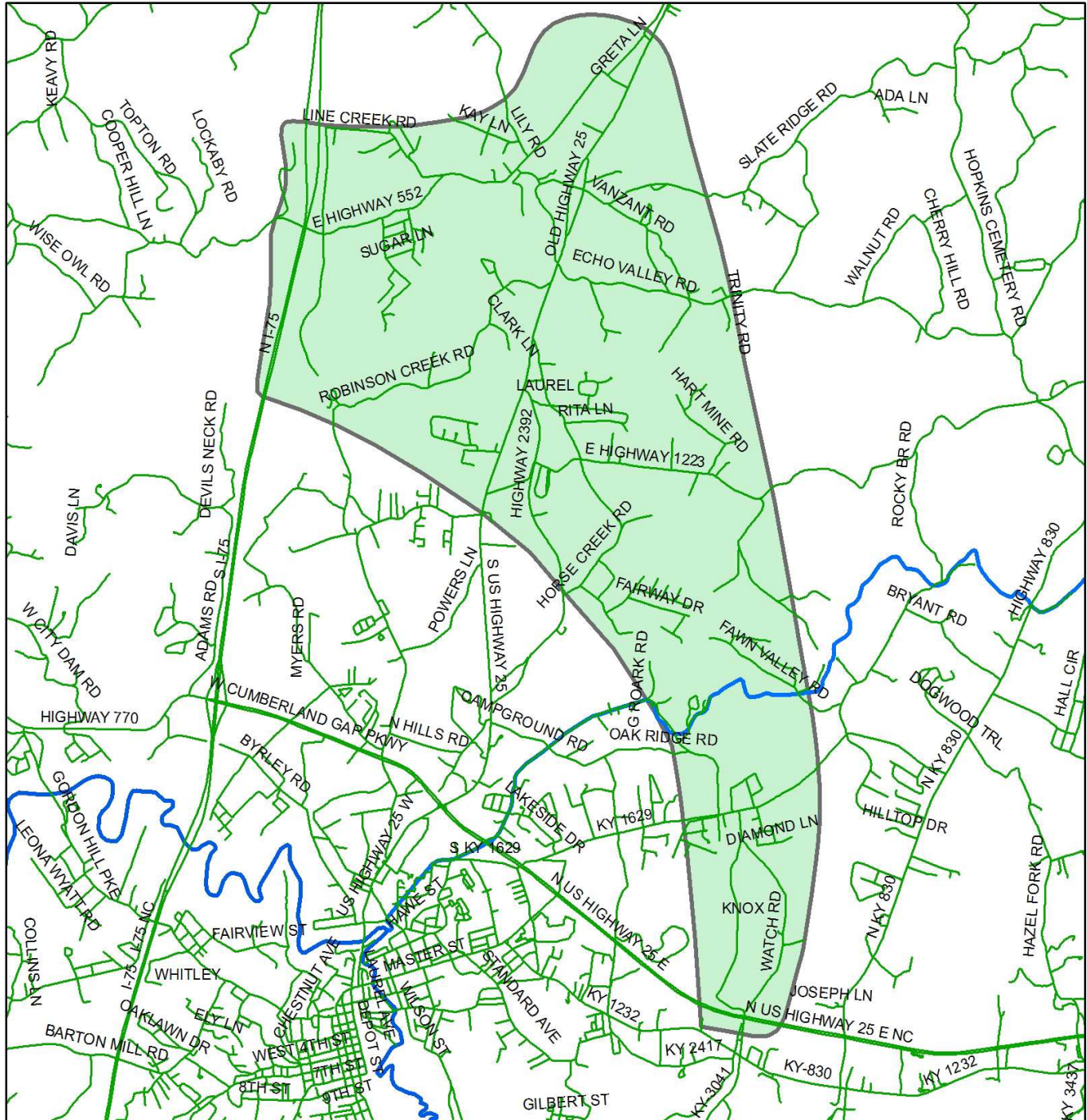
Study Focus Area
Census Tracts and Block Groups
Total Population
Population White Alone
Population by Black or African American
Population by American Indian & Alaska Native Alone
Population by Asian Alone
Population by Native Hawaiian & Other Pacific Alone
Population by Two or More Races
Population by Hispanic or Latino Origin
Population by Poverty Level
Population by Persons 65 and Over
Population by Persons 5 and Over with Disabilities



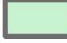


KY-3041 Corbin By-Pass Extension Study

Item 11.190.00

Study Area



Legend

-  Corbin By-Pass Extension Study Area
-  Roads
-  County Line

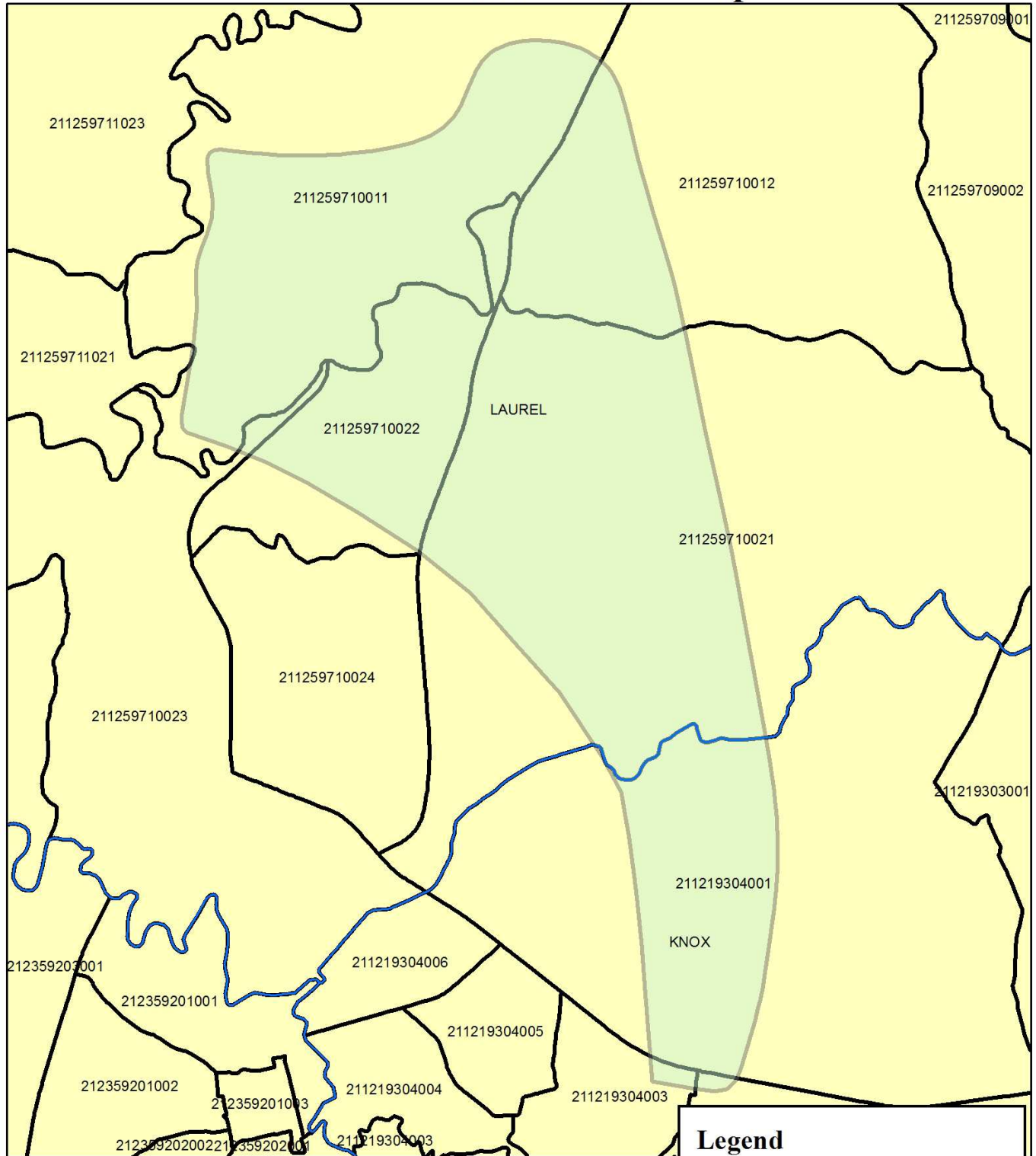
This document was prepared in cooperation with the Kentucky Transportation Cabinet.



KY-3041 Corbin By-Pass Extension Study




Item 11.190.00

2010 Census Block Groups



This map was prepared in cooperation with the KY Transportation Cabinet.

Legend

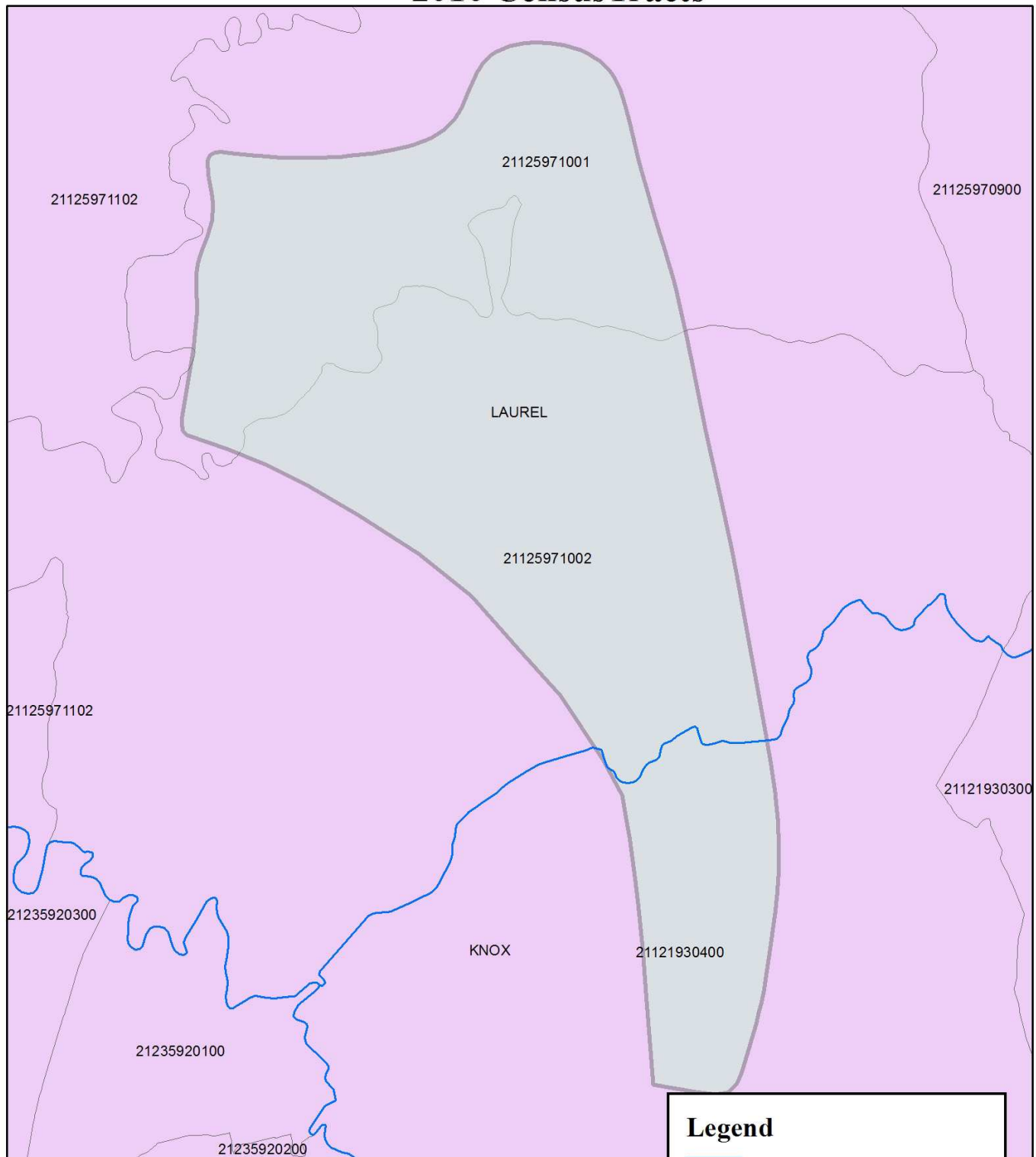
-  Corbin Bypass Study Area
-  2010 Census Block Groups
-  County Line






KY-3041 Corbin By-Pass Extension Study

Item 11.190.00

2010 Census Tracts



Legend

-  County Line
-  Corbin Bypass Study Area
-  2010 Census Tracts

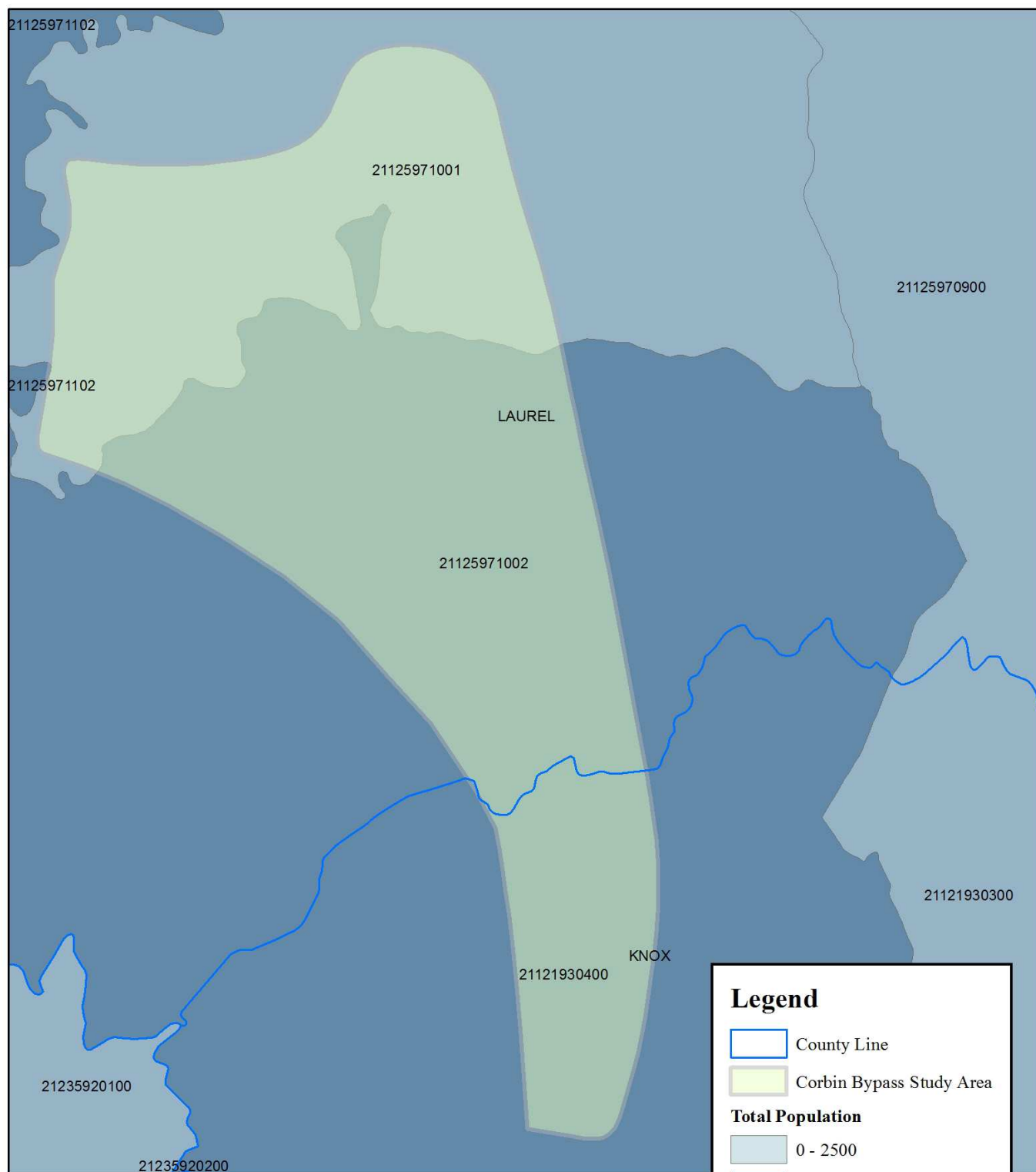
This map was prepared in cooperation with the KY Transportation Cabinet.



KY-3041 Corbin By-Pass Extension Study

Item 11.190.00

2010 Total Population by Census Tract



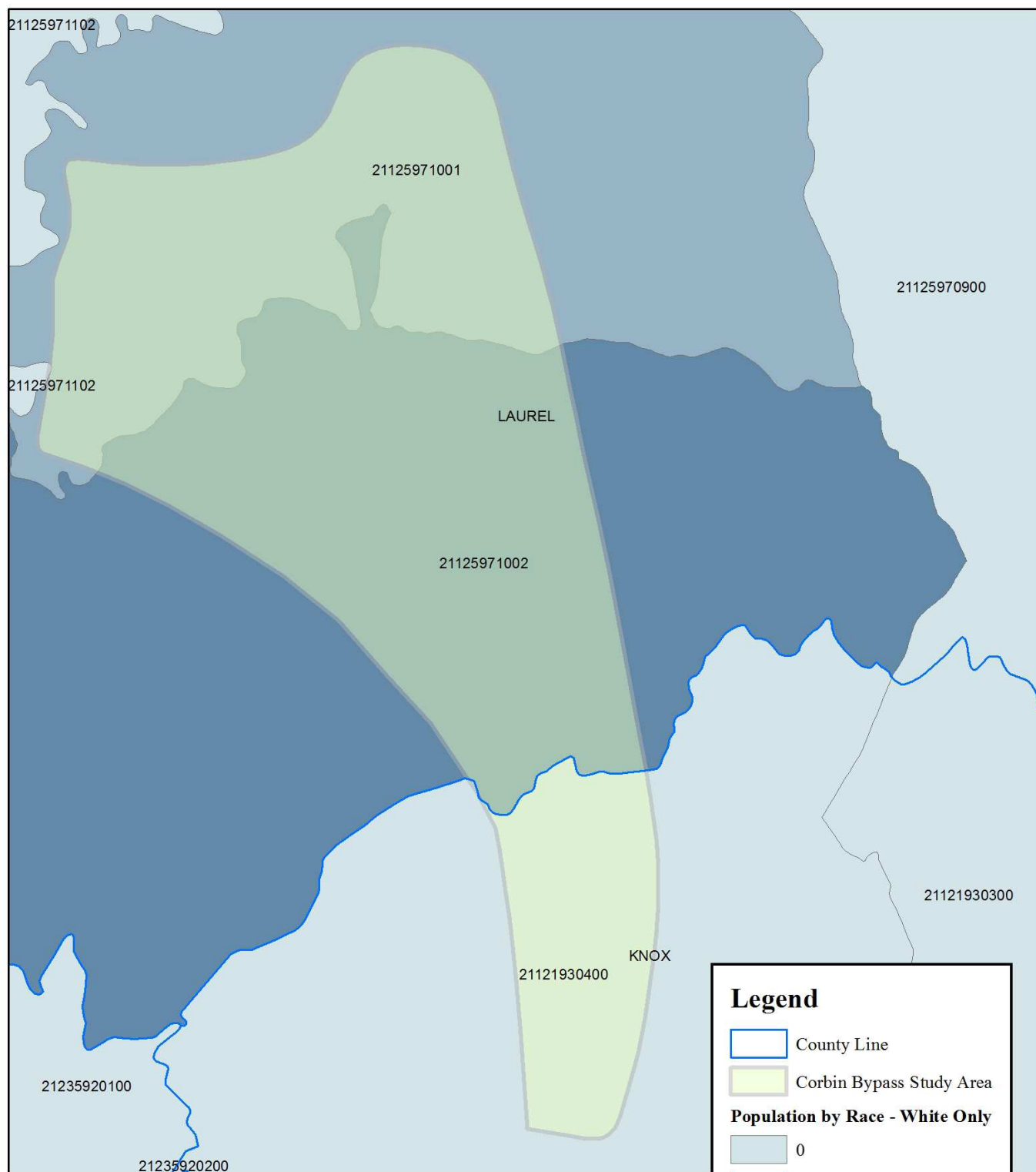
This map was prepared in cooperation with the KY Transportation Cabinet.





KY-3041 Corbin By-Pass Extension Study Item 11.190.00

2010 Total Population by Census Tract by Race - White Only



This map was prepared in cooperation with the KY Transportation Cabinet.

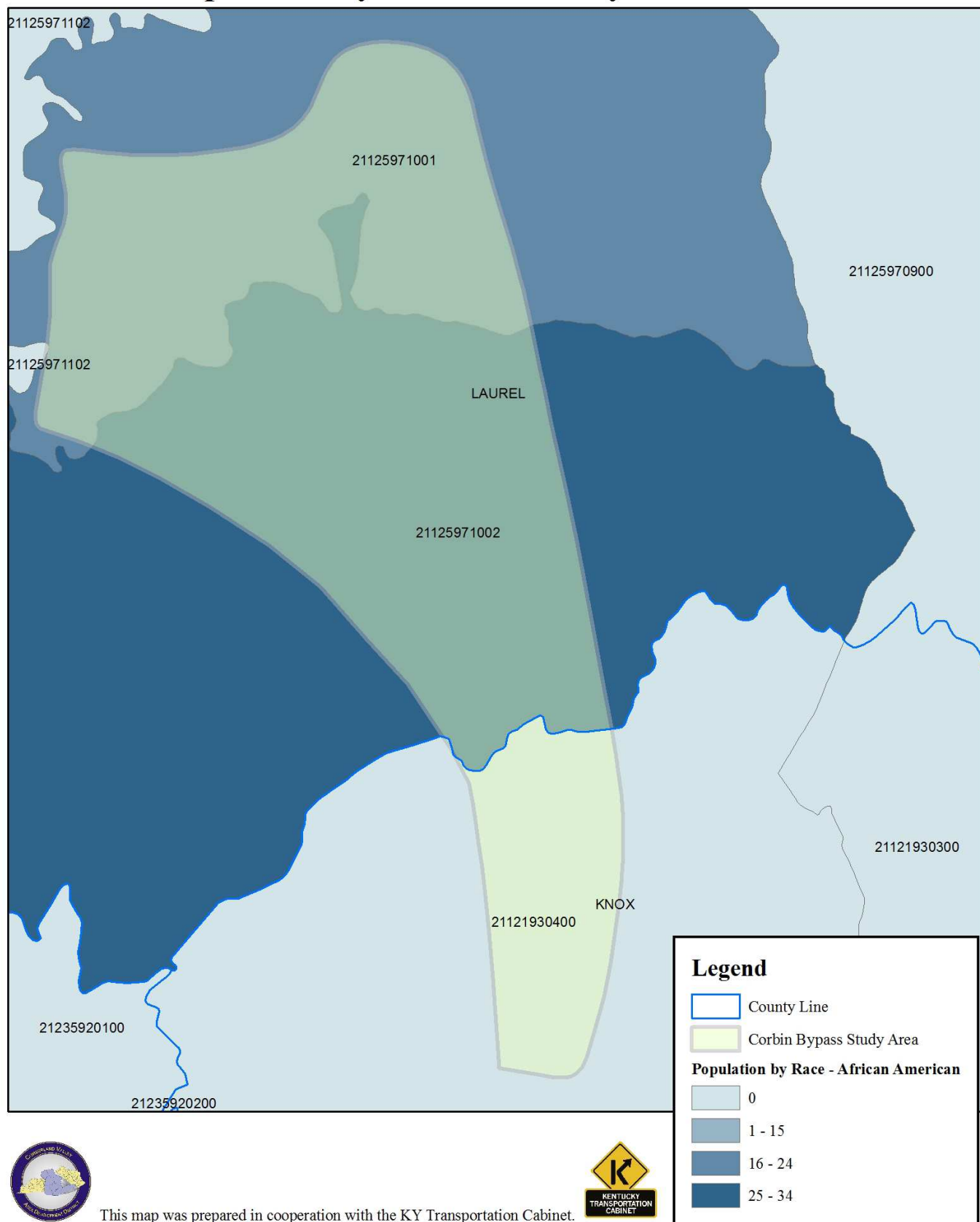




KY-3041 Corbin By-Pass Extension Study

Item 11.190.00

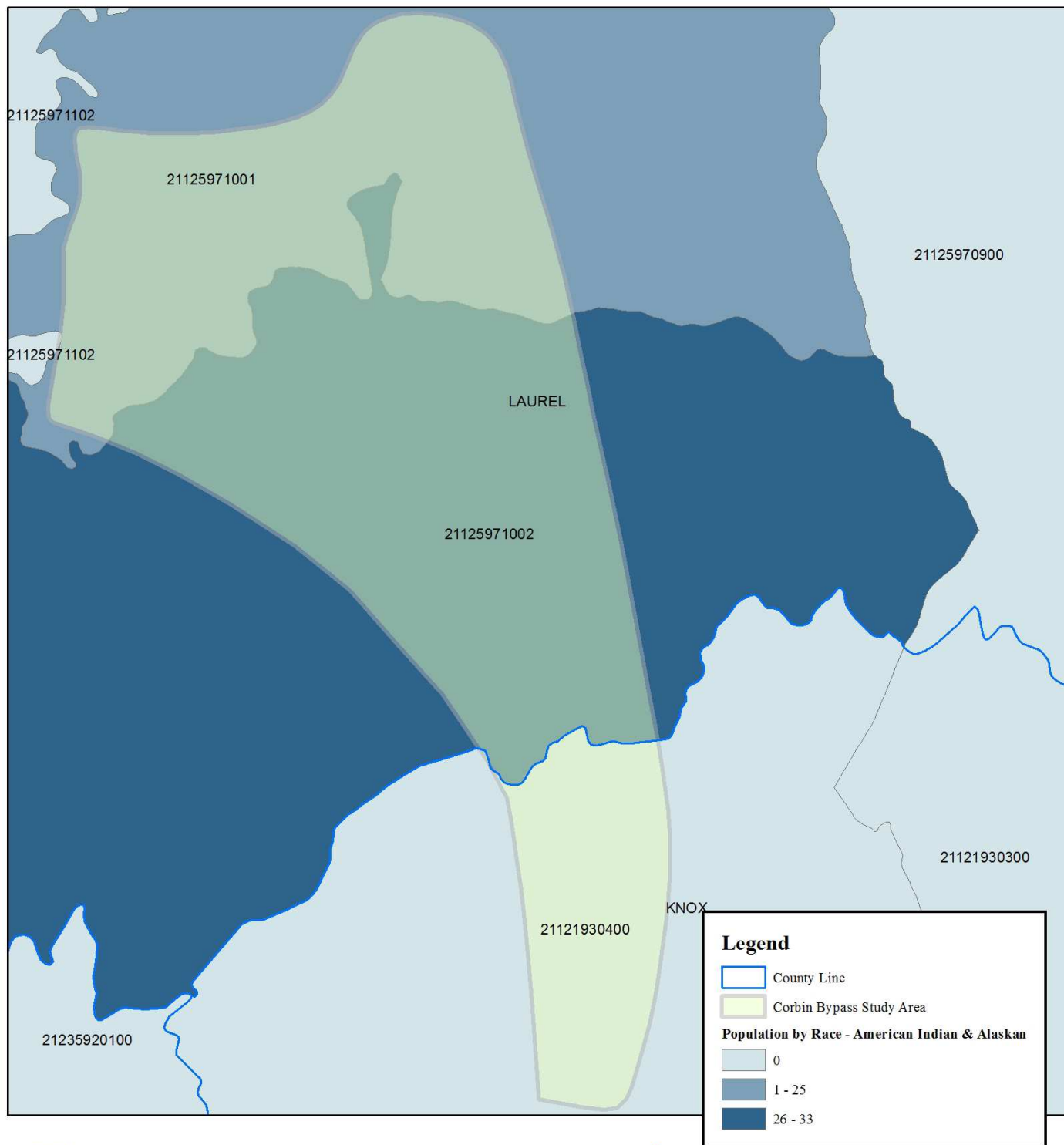
2010 Total Population by Census Tract by Race - African American





KY-3041 Corbin By-Pass Extension Study Item 11.190.00

2010 Total Population by Census Tract by Race - American Indian & Alaska Native



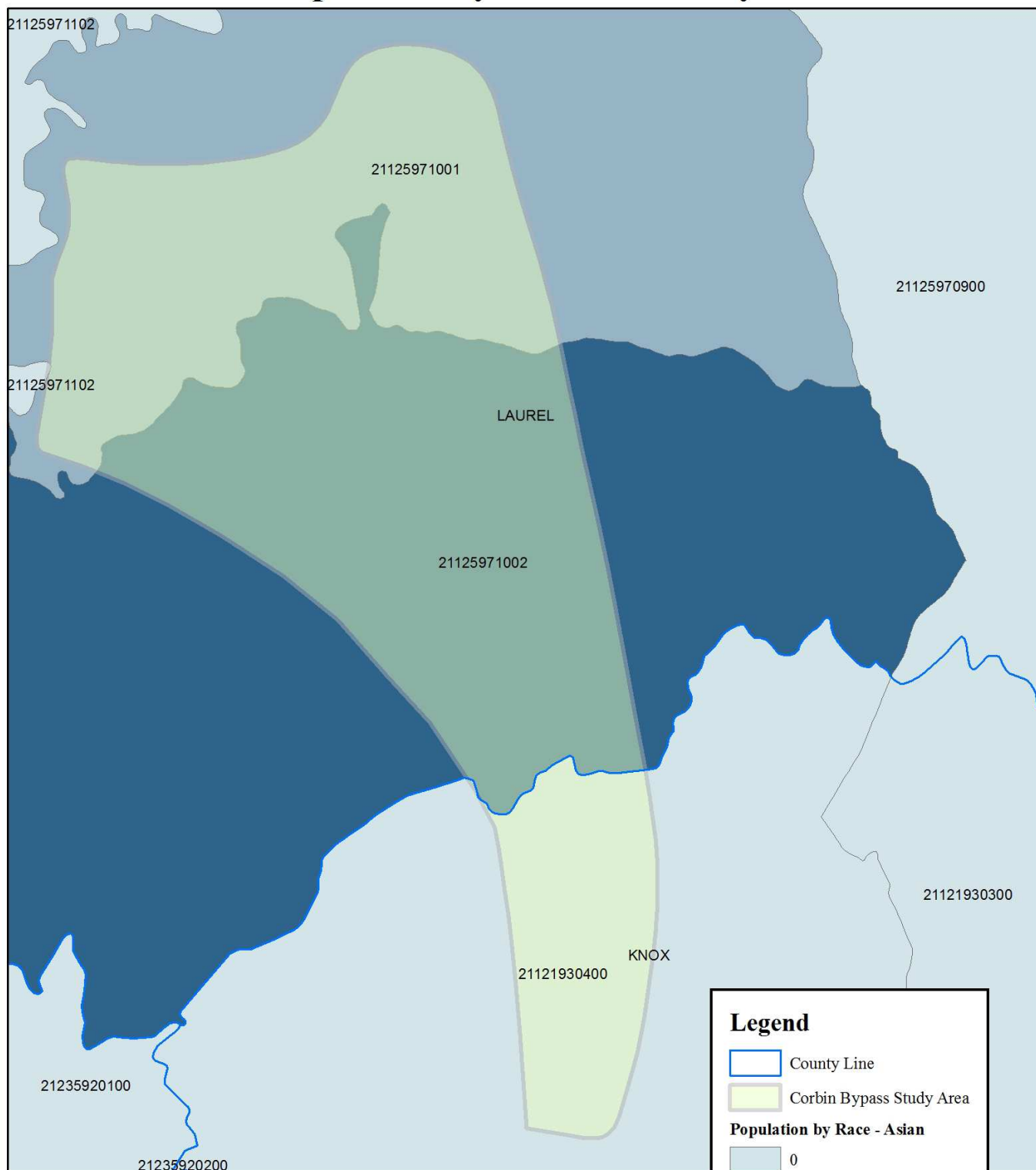
This map was prepared in cooperation with the KY Transportation Cabinet.





KY-3041 Corbin By-Pass Extension Study Item 11.190.00

2010 Total Population by Census Tract by Race - Asian



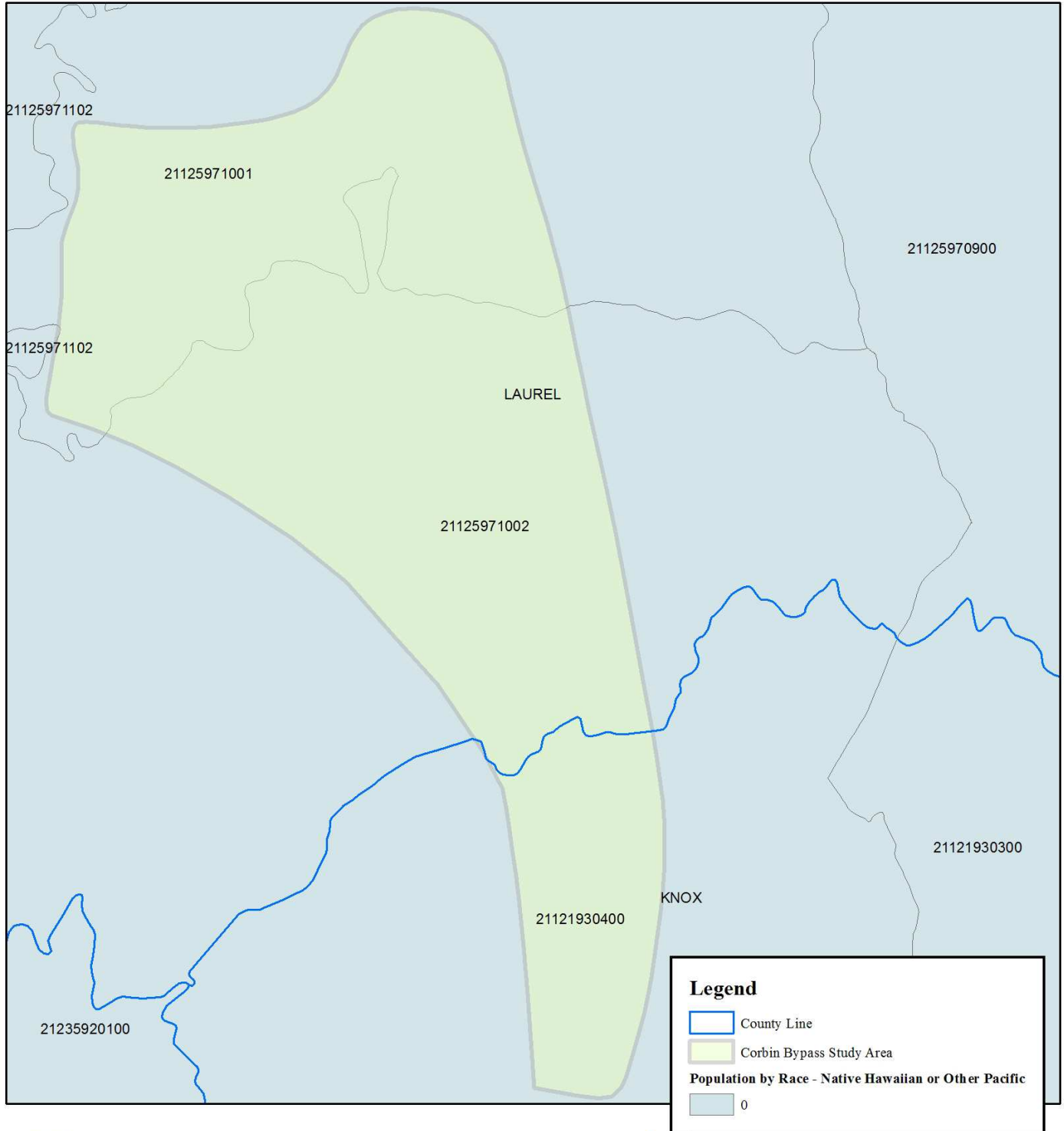
This map was prepared in cooperation with the KY Transportation Cabinet.





KY-3041 Corbin By-Pass Extension Study Item 11.190.00

2010 Total Population by Census Tract by Race - Native Hawaiian & Other Pacific



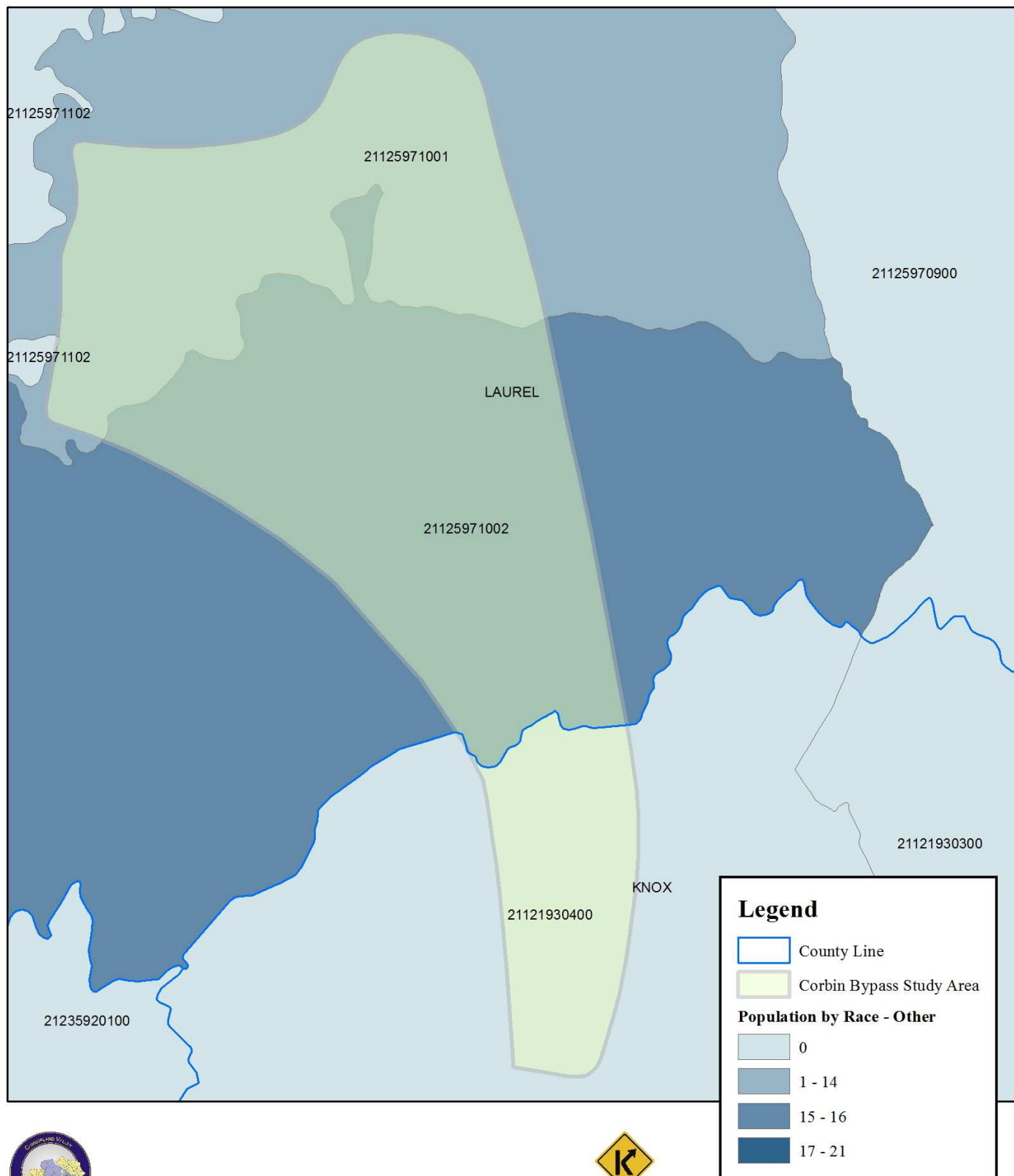
This map was prepared in cooperation with the KY Transportation Cabinet.





KY-3041 Corbin By-Pass Extension Study Item 11.190.00

2010 Total Population by Census Tract by Race - Other



This map was prepared in cooperation with the KY Transportation Cabinet.

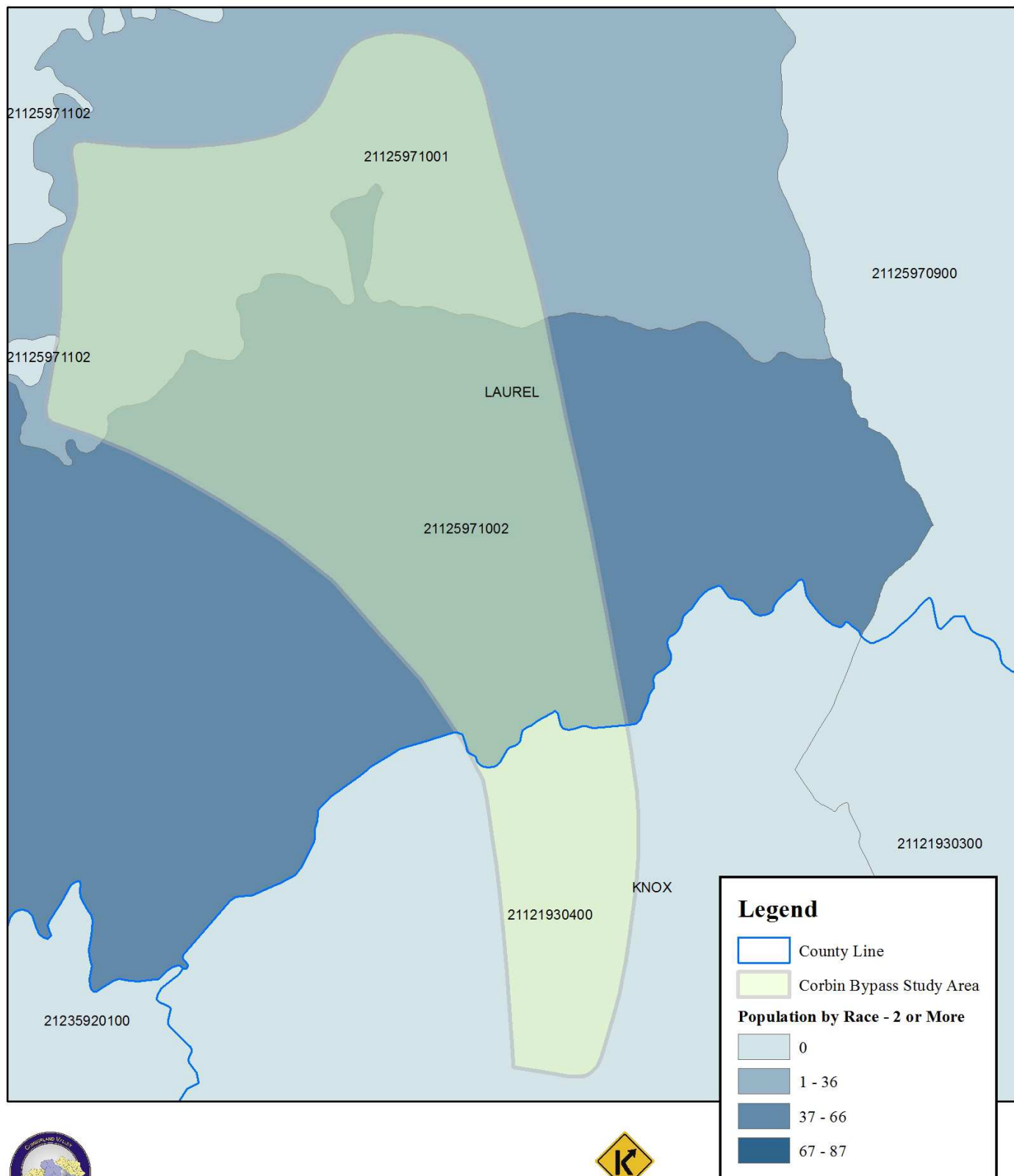




KY-3041 Corbin By-Pass Extension Study

Item 11.190.00

2010 Total Population by Census Tract by Race - 2 or More



This map was prepared in cooperation with the KY Transportation Cabinet.

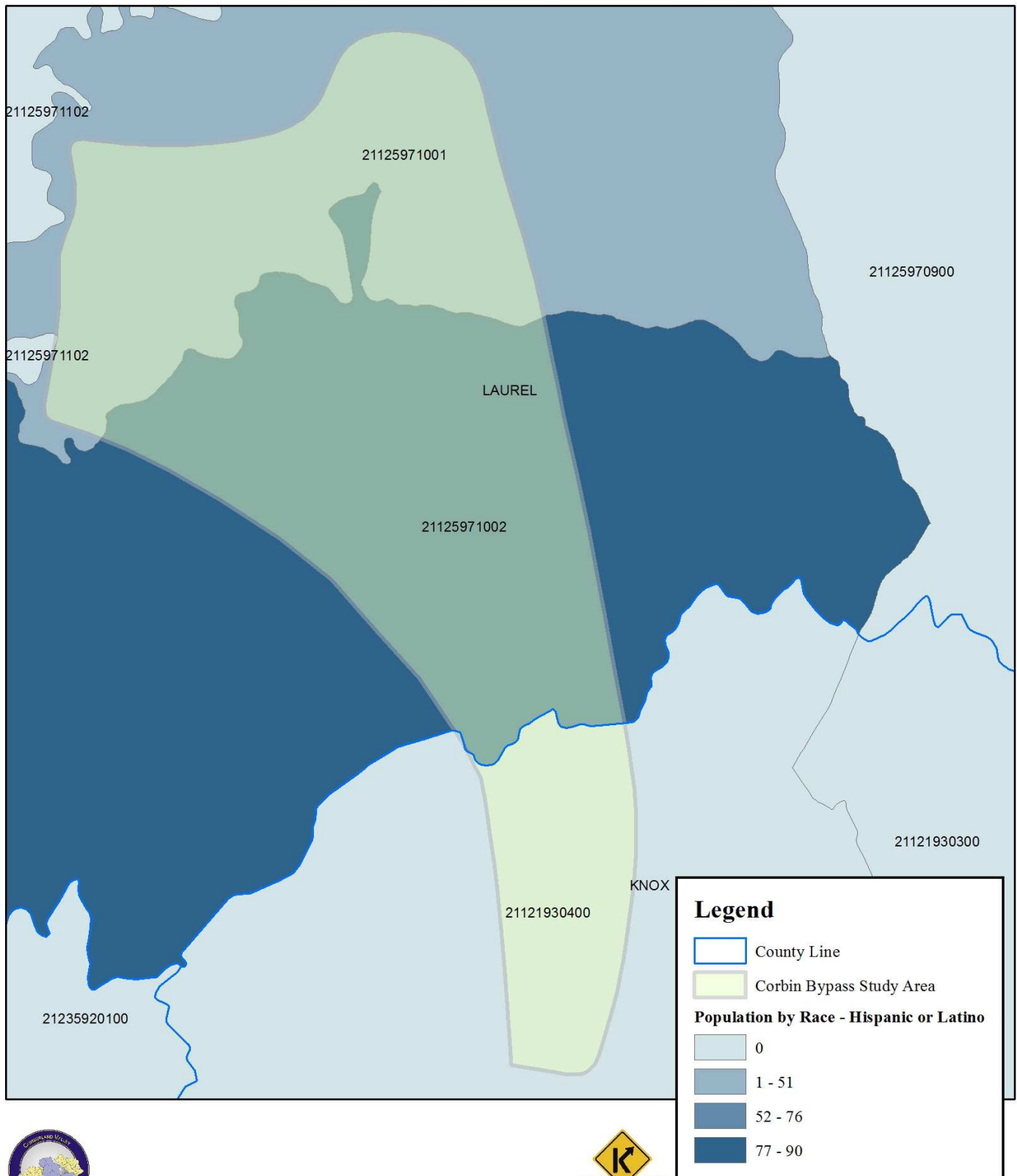




KY-3041 Corbin By-Pass Extension Study

Item 11.190.00

2010 Total Population by Census Tract by Race - Hispanic or Latino



This map was prepared in cooperation with the KY Transportation Cabinet.

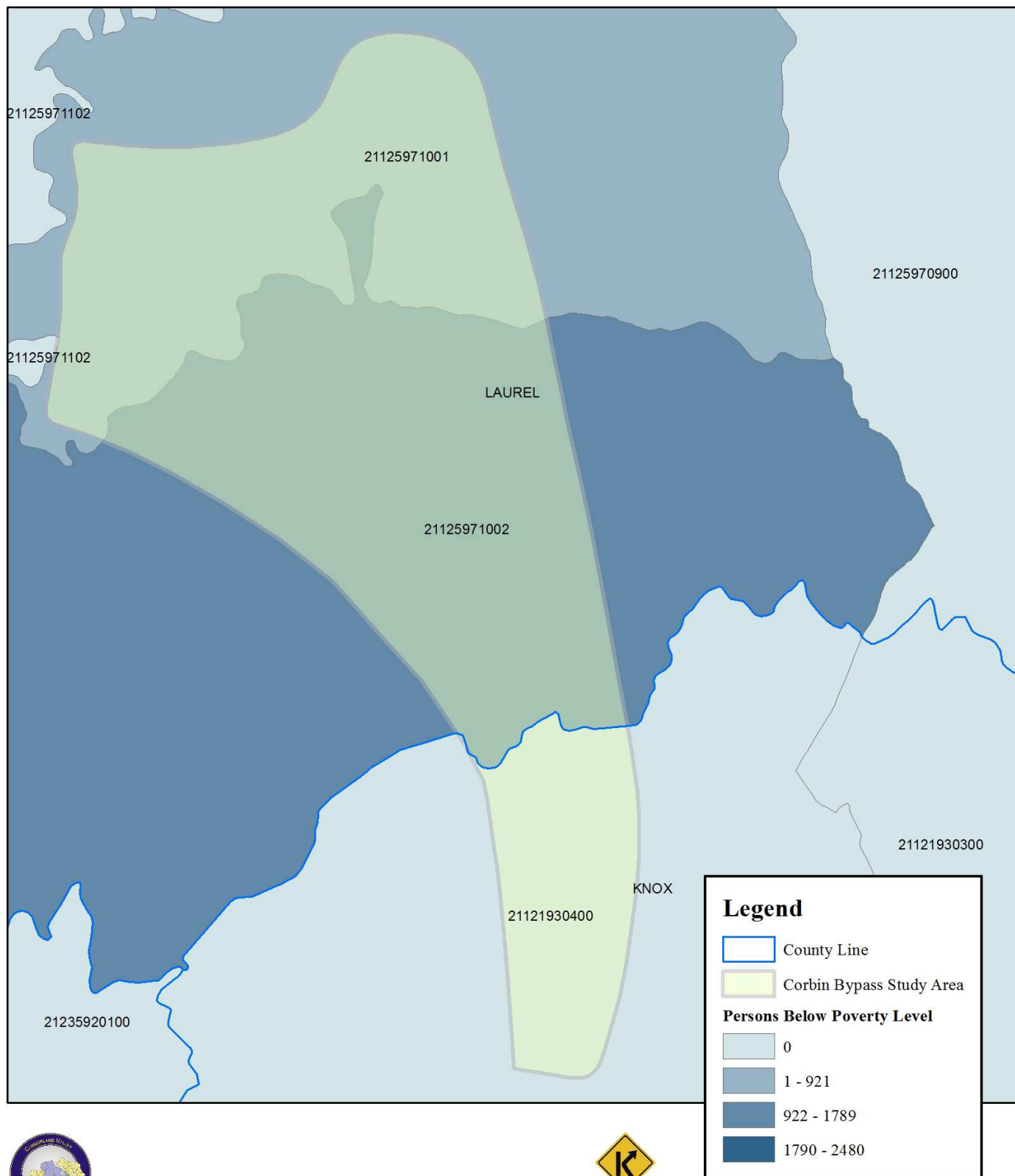




KY-3041 Corbin By-Pass Extension Study

Item 11.190.00

2010 Total Population by Census Tract - Persons Below Poverty Level



This map was prepared in cooperation with the KY Transportation Cabinet.

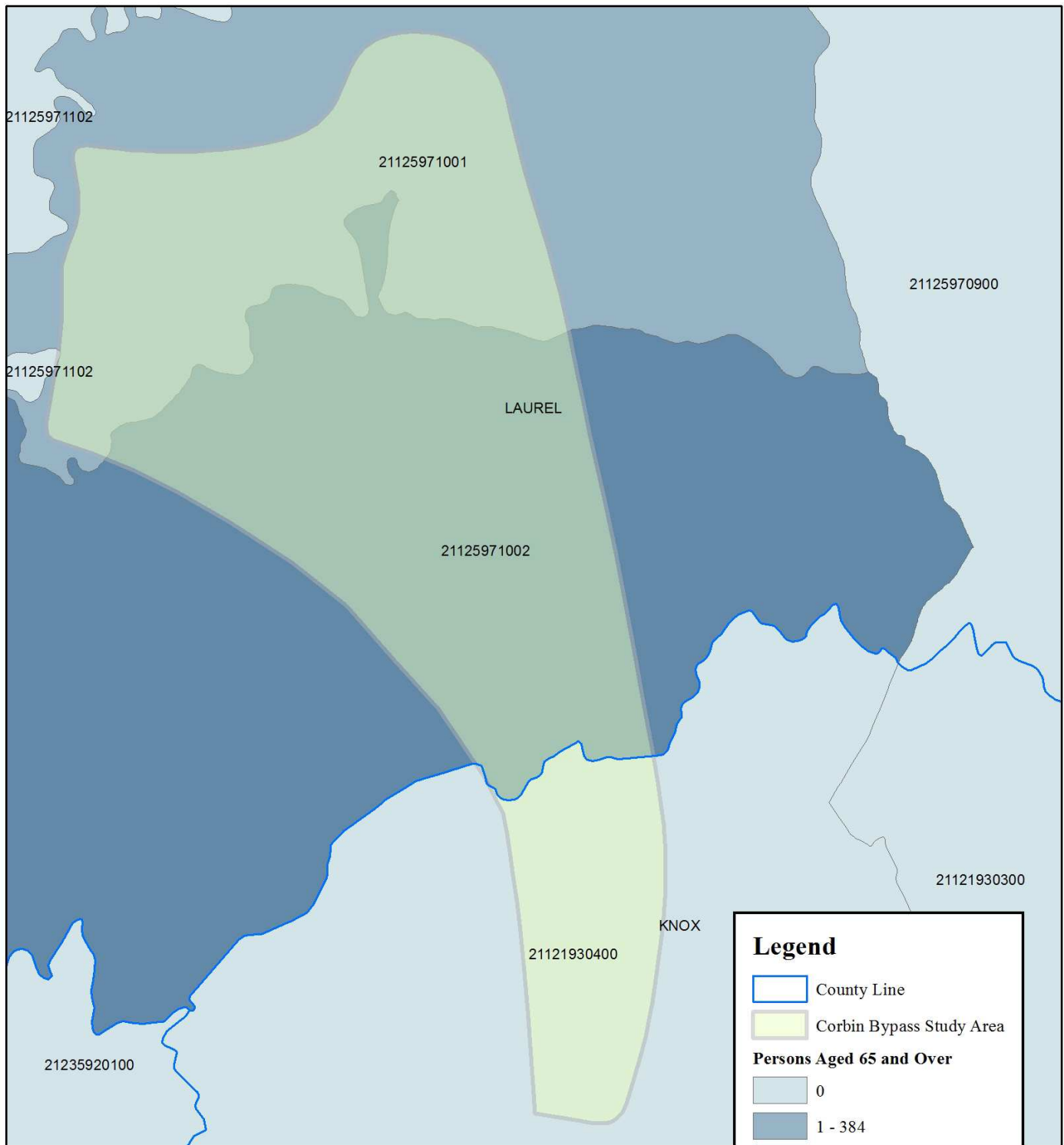




KY-3041 Corbin By-Pass Extension Study

Item 11.190.00

2010 Total Population by Census Tract - Persons Aged 65 and Over



This map was prepared in cooperation with the KY Transportation Cabinet.

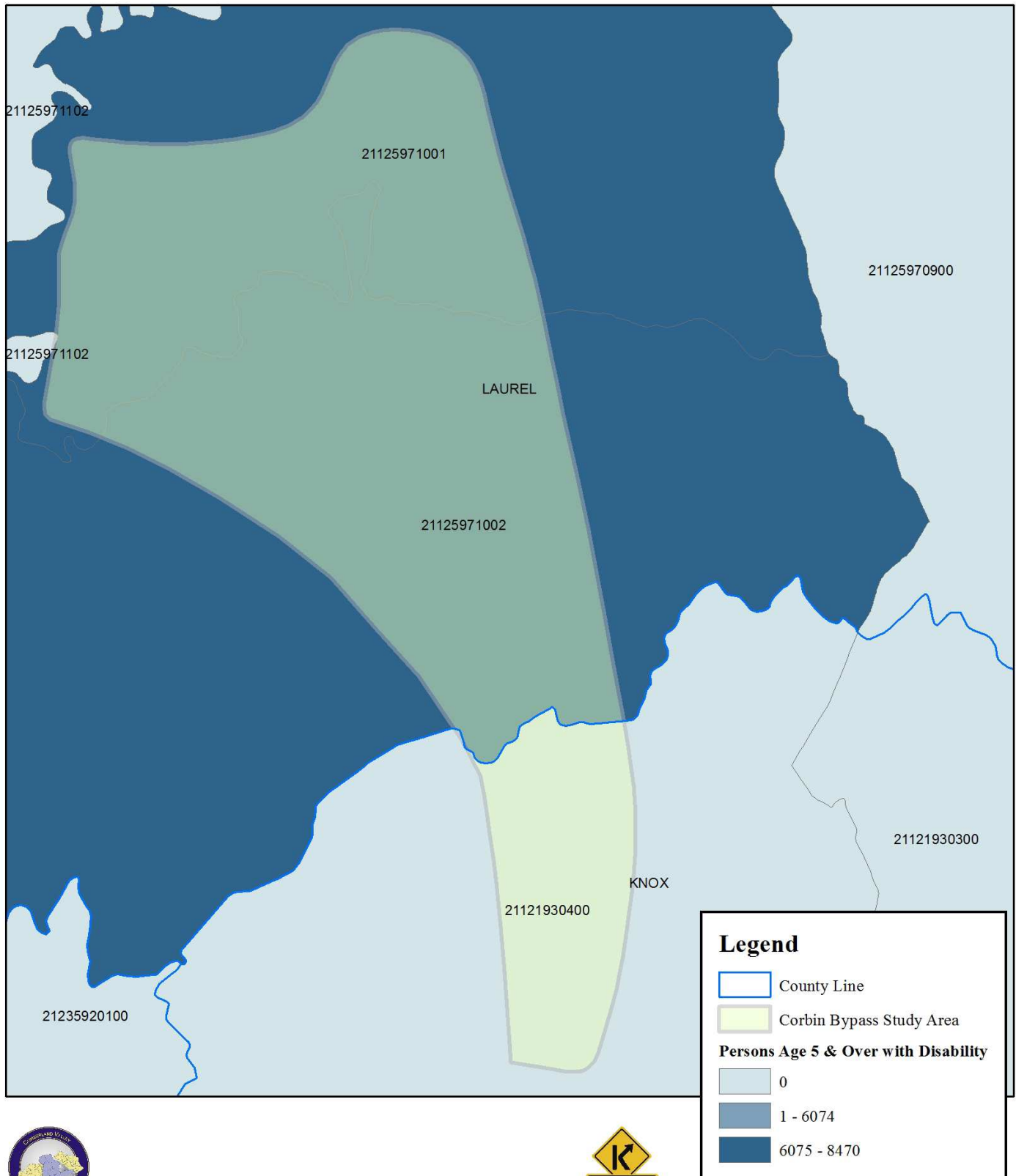




KY-3041 Corbin By-Pass Extension Study

Item 11.190.00

2000 Census Persons Age 5 & Over with Disability



This map was prepared in cooperation with the KY Transportation Cabinet.



Appendix B: Tables
2010 Census Data Tracts & Block Groups

Total Population
Population White Alone
Population by Black or African American
Population by American Indian & Alaska Native Alone
Population by Asian Alone
Population by American Indian & Alaska Native Alone
Population by Native Hawaiian & Other Pacific Alone
Population by Two or More Races
Population by Hispanic or Latino Origin
Population by Poverty Level
Population by Persons 65 and Over
Population by Persons 5 and Over with Disabilities

2010 Census Total Population	
Area	Population
United States	308,745,538
Kentucky	4,339,357
Knox County	31,735
Laurel County	58,849
Census Tracts & Block Groups	
Knox County Census Tract 9304	7,670
Knox County Census Tract 9304 Block Group 1	2,219
Laurel County Census Tract 9710.01	3,654
Laurel County Census Tract 9710.01 Block Group 1	2,633
Laurel County Census Tract 9710.01 Block Group 2	1,021
Laurel County Census Tract 9710.02	6,483
Laurel County Census Tract 9710.02 Block Group 1	1,791
Laurel County Census Tract 9710.02 Block Group 2	935

Appendix B – Source U.S. Census Bureau 2010 Census

2010 Census Total Population - White Alone			
Area	Total Population	White Alone	% of White Alone
United States	308,745,538	488,991,134	77.90%
Kentucky	4,339,357	3,882,987	88.60%
Knox County	31,735	30,891	97.30%
Laurel County	58,849	57,813	97.20%
Census Tracts & Block Groups			
Knox County Census Tract 9304	7,670	7,479	97.51%
Knox County Census Tract 9304 Block Group 1	2,219	2,161	97.39%
Laurel County Census Tract 9710.01	3,654	3,551	97.18%
Laurel County Census Tract 9710.01 Block Group 1	2,633	2,552	96.92%
Laurel County Census Tract 9710.01 Block Group 2	1,021	999	97.85%
Laurel County Census Tract 9710.02	6,483	6,290	97.02%
Laurel County Census Tract 9710.02 Block Group 1	1,791	1,736	96.93%
Laurel County Census Tract 9710.02 Block Group 2	935	904	96.68%

Appendix B – Source U.S. Census Bureau 2010 Census

2010 Census Total Population - Black or African American Alone			
Area	Total Population	Black or African American Alone	Percent Black or African American Alone
United States	308,745,538	82,409,586	13.10%
Kentucky	4,339,357	354,119	8.10%
Knox County	31,735	371	1.20%
Laurel County	58,849	472	0.80%
Census Tracts & Block Groups			
Knox County Census Tract 9304	7,670	15	0.20%
Knox County Census Tract 9304 Block Group 1	2,219	1	0.05%
Laurel County Census Tract 9710.01	3,654	24	1.00%
Laurel County Census Tract 9710.01 Block Group 1	2,633	18	1.00%
Laurel County Census Tract 9710.01 Block Group 2	1,021	6	1.00%
Laurel County Census Tract 9710.02	6,483	34	0.52%
Laurel County Census Tract 9710.02 Block Group 1	1,791	12	1.00%
Laurel County Census Tract 9710.02 Block Group 2	935	8	0.86%

2010 Census Total Population - American Indian & Alaska Native Alone			
Area	Total Population	American Indian & Alaska Native Alone	Percent American Indian & Alaska Native Alone
United States	308,745,538	7,714,990	1.20%
Kentucky	4,339,357	12,429	0.30%
Knox County	31,735	76	0.20%
Laurel County	58,849	195	0.30%
Census Tracts & Block Groups			
Knox County Census Tract 9304	7,670	25	0.33%
Knox County Census Tract 9304 Block Group 1	2,219	5	0.23%
Laurel County Census Tract 9710.01	3,654	25	0.68%
Laurel County Census Tract 9710.01 Block Group 1	2,633	17	0.65%
Laurel County Census Tract 9710.01 Block Group 2	1,021	8	0.78%
Laurel County Census Tract 9710.02	6,483	33	0.51%
Laurel County Census Tract 9710.02 Block Group 1	1,791	8	0.45%
Laurel County Census Tract 9710.02 Block Group 2	935	15	1.06%

Appendix B – Source U.S. Census Bureau 2010 Census

2010 Census Total Population - Asian Alone			
Area	Total Population	Asian Alone	Percent Asian Alone
United States	308,745,538	32,291,642	5.10%
Kentucky	4,339,357	55,336	1.30%
Knox County	31,735	81	0.30%
Laurel County	58,849	346	0.60%
Census Tracts & Block Groups			
Knox County Census Tract 9304	7,670	43	0.56%
Knox County Census Tract 9304 Block Group 1	2,219	26	1.17%
Laurel County Census Tract 9710.01	3,654	4	0.11%
Laurel County Census Tract 9710.01 Block Group 1	2,633	2	0.08%
Laurel County Census Tract 9710.01 Block Group 2	1,021	2	0.20%
Laurel County Census Tract 9710.02	6,483	44	0.68%
Laurel County Census Tract 9710.02 Block Group 1	1,791	12	0.67%
Laurel County Census Tract 9710.02 Block Group 2	935	1	0.11%

Appendix B – Source U.S. Census Bureau 2010 Census

2010 Census Total Population - Native Hawaiian & Other Pacific Alone			
Area	Total Population	Native Hawaiian & Other Pacific	Percent Native Hawaiian & Other Pacific
United States	308,745,538	14,14,456	0.20%
Kentucky	4,339,357	3441	0.10%
Knox County	31,735	18	0.10%
Laurel County	58,849	20	0.00%
Census Tracts & Block Groups			
Knox County Census Tract 9304	7,670	0	0%
Knox County Census Tract 9304 Block Group 1	2,219	0	0%
Laurel County Census Tract 9710.01	3,654	0	0%
Laurel County Census Tract 9710.01 Block Group 1	2,633	0	0%
Laurel County Census Tract 9710.01 Block Group 2	1,021	0	0%
Laurel County Census Tract 9710.02	6,483	0	0%
Laurel County Census Tract 9710.02 Block Group 1	1,791	0	0%
Laurel County Census Tract 9710.02 Block Group 2	935	0	0%

Appendix B – Source U.S. Census Bureau 2010 Census

2010 Census Total Population - Two or More Races			
Area	Total Population	Two or More Races	Percent Two or More Races
United States	308,745,538	15,006,272	2.40%
Kentucky	4,339,357	72,103	1.60%
Knox County	31,735	298	0.90%
Laurel County	58,849	616	1.00%
Census Tracts & Block Groups			
Knox County Census Tract 9304	7,670	87	1.13%
Knox County Census Tract 9304 Block Group 1	2,219	20	0.90%
Laurel County Census Tract 9710.01	3,654	36	0.99%
Laurel County Census Tract 9710.01 Block Group 1	2,633	31	1.18%
Laurel County Census Tract 9710.01 Block Group 2	1,021	5	0.49%
Laurel County Census Tract 9710.02	6,483	66	1.02%
Laurel County Census Tract 9710.02 Block Group 1	1,791	17	0.95%
Laurel County Census Tract 9710.02 Block Group 2	935	2	0.21%

Appendix B – Source U.S. Census Bureau 2010 Census

2010 Census Total Population - Hispanic or Latino Origin			
Area	Total Population	Hispanic or Latino Origin	Percent Hispanic or Latino Origin
United States	308,745,538	106,055,416	16.90%
Kentucky	4,339,357	142,028	3.20%
Knox County	31,735	326	1.00%
Laurel County	58,849	802	1.30%
Census Tracts & Block Groups			
Knox County Census Tract 9304	7,670	76	0.99%
Knox County Census Tract 9304 Block Group 1	2,219	20	0.90%
Laurel County Census Tract 9710.01	3,654	51	1.40%
Laurel County Census Tract 9710.01 Block Group 1	2,633	47	1.79%
Laurel County Census Tract 9710.01 Block Group 2	1,021	4	0.39%
Laurel County Census Tract 9710.02	6,483	90	1.39%
Laurel County Census Tract 9710.02 Block Group 1	1,791	29	1.62%
Laurel County Census Tract 9710.02 Block Group 2	935	10	1.07%

2010 Census Total Population - Persons Below Poverty Level			
Area	Total Population	Persons Below Poverty Level	Percent Persons Below Poverty Level
United States	308,745,538	46,215,956	15.30%
Kentucky	4,339,357	800,226	19.00%
Knox County	31,735	11,226	36.50%
Laurel County	58,849	11,476	20.10%
Census Tracts			
Knox County Census Tract 9304	7,670	2,480	34.90%
Laurel County Census Tract 9710.01	3,654	921	25.80%
Laurel County Census Tract 9710.02	6,483	1,789	27.20%

2010 Census Total Population - Persons 65 and Over			
Area	Total Population	Persons 65 and Over	Percent Persons 65 & Over
United States	308,745,538	86,290,712	13.70%
Kentucky	4,339,357	614,653	14.00%
Knox County	31,735	5,096	16.10%
Laurel County	58,849	8,239	13.90%
Census Tracts & Block Groups			
Knox County Census Tract 9304	7,670	1,277	16.65%
Knox County Census Tract 9304 Block Group 1	2,219	303	13.65%
Laurel County Census Tract 9710.01	3,654	384	10.51%
Laurel County Census Tract 9710.01 Block Group 1	2,633	271	10.29%
Laurel County Census Tract 9710.01 Block Group 2	1,021	129	12.63%
Laurel County Census Tract 9710.02	6,483	883	13.62%
Laurel County Census Tract 9710.02 Block Group 1	1,791	224	12.51%
Laurel County Census Tract 9710.02 Block Group 2	935	129	13.80%

Appendix B – Source U.S. Census Bureau 2000 Census

2000 Census Total Population - Persons 5 and Over with Disabilities*			
Area	Total Population	Persons 5 and Over with Disabilities	Percent of Persons 5 and Over with Disabilities
United States	281,421,906	89,142,962	31.68%
Kentucky	4,041,769	1,686,789	41.73%
Knox County	31,795	22,223	69.89%
Laurel County	52,715	27,419	52.01%
Census Tracts			
Knox County Census Tract 9304	7,670	4,465	58.21%
Laurel County Census Tract 9710.01 & 9710.02 Combined	10,137	5,021	49.53%

* 2010 Census Data Unavailable as of June 30, 2013. Statistics from 2000 Census were used.